



PRESBYTERY OF THE PEAKS



office@peakspresbytery.org

Welcome To
PEAKS POSTINGS

THIS WEEK'S ANNOUNCEMENTS BELOW

Date:	Time:	Event:
1-18-24	2:00 p.m.	Adaptive Leadership Pastor Cohort #1
1-20-24	10:00 a.m.	Clerk of Session Training (Zoom)
1-22-24	6:00 p.m.	Commission on Administration (Zoom)



OFFICE HOURS

MONDAY - THURSDAY

8:30AM - 4:30PM

FAX:

(434) 845-7829

MAILING ADDRESS

PO BOX 2519

FOREST, VA 24551



1195 CARTERS STABLE ROAD
FOREST, VA 24551



(434) 845-1754



office@peakspresbytery.org



www.peakspresbytery.org

February Grant Deadlines



Grant	Commission/ Group	Deadline
Church Redevelopment	Church Partnership	February 1 April 1 June 1
Shared Ministry	Church Partnership	August 1 October 1
Pastoral Leadership	Commission on Ministry	
Black Caucus	Black Caucus	Feb 28 May 31 Aug 31 Oct 31
Community Block	Justice & Mercy	February 1

[Click here for more information and applications](#)
or look on the website under Resources>Grants

A Note from the Stated Clerk:

Due to the premature arrival of my son, I will be stepping back from my duties for several weeks to focus on my recovery and supporting his growth and development while he is in the hospital.

Please direct urgent questions to the presbytery office (office@peaks-presbytery.org) or to our General Presbyter, Rev. Carl Utley (c.utley@peaks-presbytery.org).

In Christ, *Rev. Betsy Soto*



Ezra Schuyler Soto

December 24, 2023, 7:57pm ★ **1 pound 15 ounces**



*Please keep Ezra, Betsy, Ed, Teddy and Eli
in your prayers--Carl*



Tech Watch 2024



News you Can Use from *The Outlook*

Looking to update your technology resources this year? Check out the article *five resources every church should know about* in the current issue.

The presbytery uses several of the items mentioned. This graphic was created using Canva. Contact [donna@peaks-presbytery](mailto:donna@peaks-presbytery.org) if you need more information.

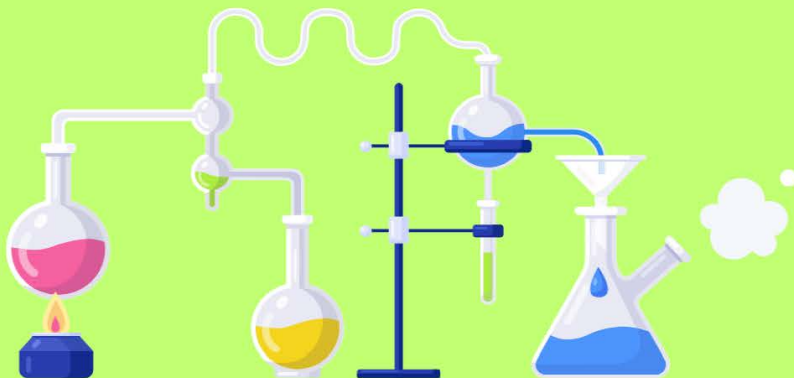
*Also, Jonathan Moelker, Campbell Memorial, makes an appearance in the issue.

[Go to The Outlook](#)

Tell Us About Your

**CHURCH
PARTNERSHIP
EXPERIMENTAL
MINI-GRANTS**

We'd love to hear and share the results and experiences from the Church Partnership grants given out to congregations in November. Send a few sentences and a photos or a 30-45 second video to communications@peakspresbytery.org.





First Pres
PRESENTS
Fine Art Series

Baroque & Organ Spectacular

JANUARY 27 - 4PM

FIRST PRESBYTERIAN CHURCH
1215 VES ROAD
SANCTUARY

** TICKETED EVENT **

\$30

To purchase call 845-6604.



Let the timeless sounds of Bach and Handel uplift your spirit and take you on a musical journey as the Lynchburg Symphony Orchestra performs at First Presbyterian Church in this collaborative concert. In this First Pres Presents Fine Arts Series 2024 kick off concert, this local orchestra will be accompanied by First Presbyterian's organist, Cory Whittier, playing the church's newly renovated 3,400 pipe organ and baritone vocalist Randall Scarlata. Tickets for this event are \$30. Tickets can be purchased by calling the Lynchburg Symphony Orchestra Office at (434) 845-6604 or at the door the afternoon of the concert.

Justice & Mercy Commission
CEDEPCA Subcommittee

EXPLORE *Guatemala* ...AND BE TRANSFORMED!

Who...?

The **Presbytery of the Peaks** is inviting its members to travel with members from the **James** to the Central American nation of Guatemala to be amazed by the natural beauty of the country and its people, and with the work of the **Protestant Center for Pastoral Studies in Central America (CEDEPCA)** and its agencies.

When...?

The trip is scheduled for
April 15-22, 2024

How...?

Estimated cost for the educational trip is 2000.00** with a 100.00 deposit due by Thursday, **February 22, 2024**

First time Peaks travelers to CEDEPCA are eligible to apply for a stipend to help defray some of the cost.

**Depending on airfare costs



for further information:

Vernie Bolden
vernies@peaks-presbytery.org

Teresa Auldridge
tauldridge@gmail.com

Photographs by travelers from the April 2023 trip

Peaks Postings is published each week on Tuesday. Please submit news, events, or prayer requests **by noon on Mondays** to Julie Burnett at julie@peakspresbytery.org for inclusion in the following issue.

Guidelines for announcements or news items to be featured in *Peaks Postings*:

- Keep the information to one page or less.
- Use links to web sites rather than including lots of details.
- Please obtain permission from the people pictured in your photos before submitting them to *Peaks Postings*.

Peaks Postings Editors reserve the right to

- feature or not feature an article. Our first priority is to feature activities within POP churches and the Presbytery.
- edit submitted articles/announcements.
- limit the number of weeks an article/announcement is featured.

Past issues of Peaks Postings are archived for about six months on our website, [Presbytery of the Peaks](#)